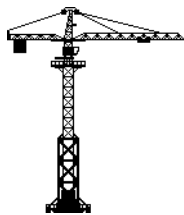
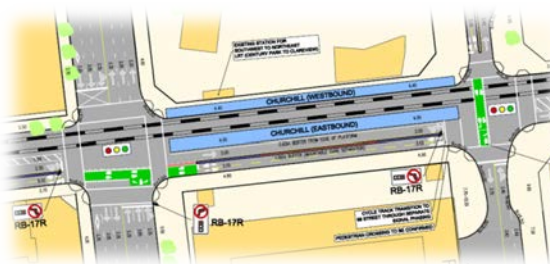
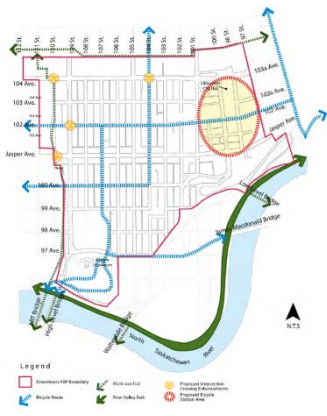


Downtown Edmonton

Transportation Planning for an Integrated and Vibrant Downtown Community



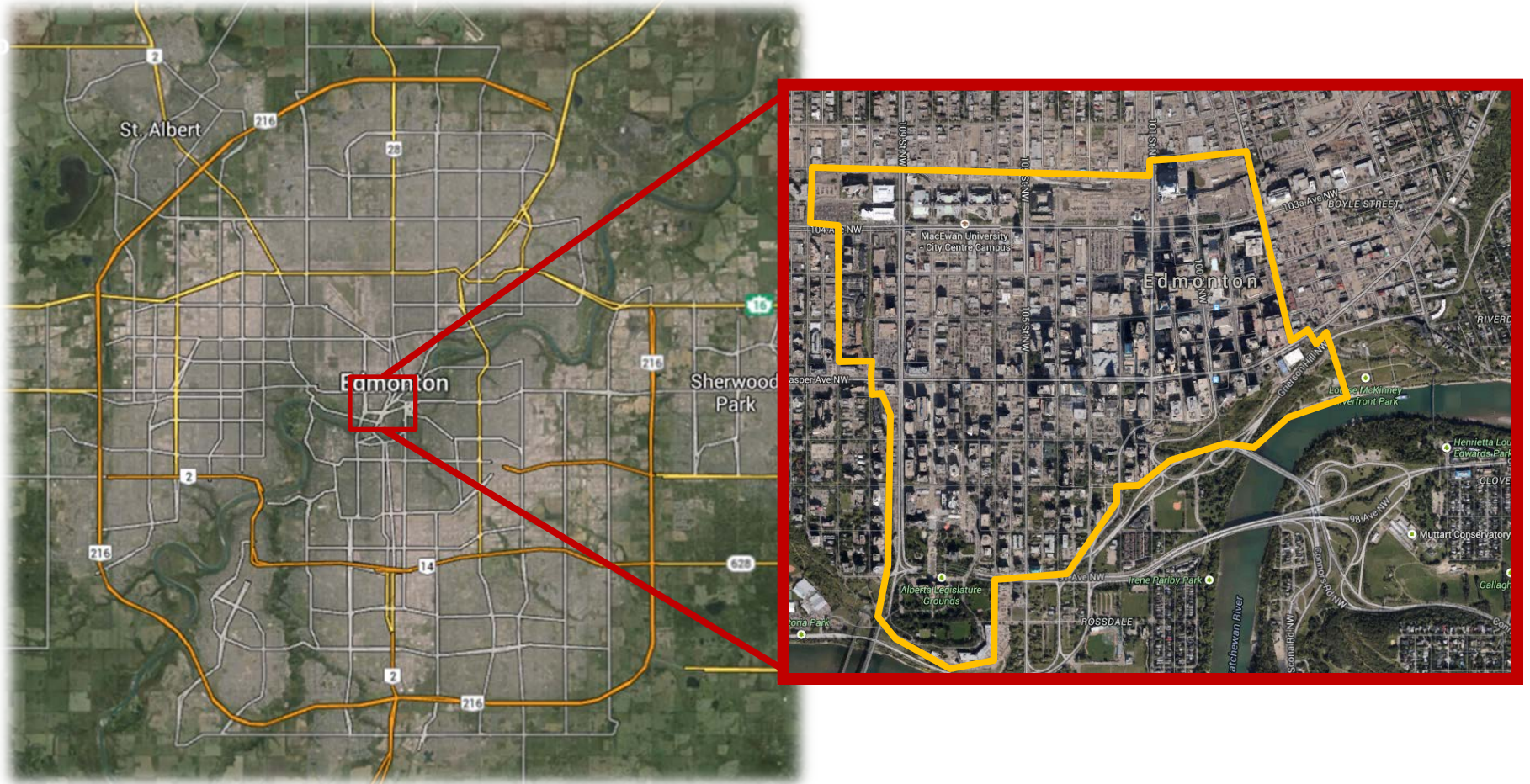
Rob Metcalf & Nathan Smith
City of Edmonton –
Transportation Planning

Outline

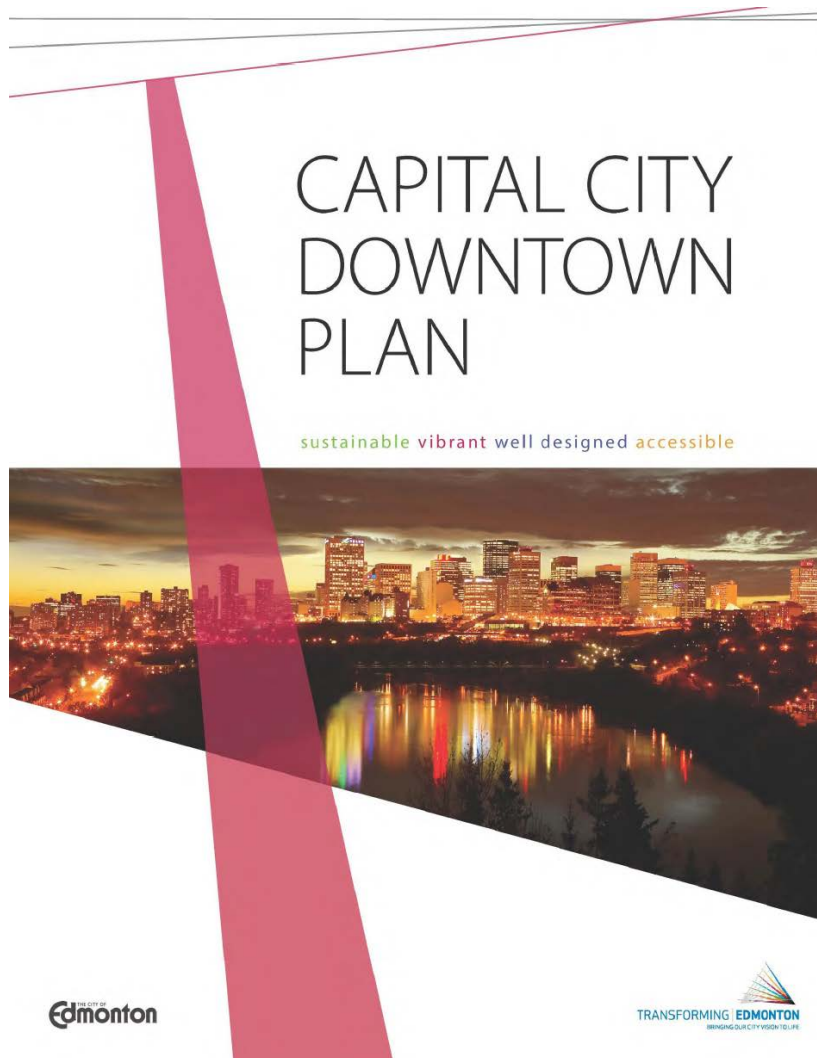


- Downtown Edmonton Background & Context
 - Policy Framework
 - Scale of Redevelopment
- Transportation Planning & Design
 - Implementation Challenges
- Coordination and Communication
 - Lessons Learned

Downtown Edmonton Background

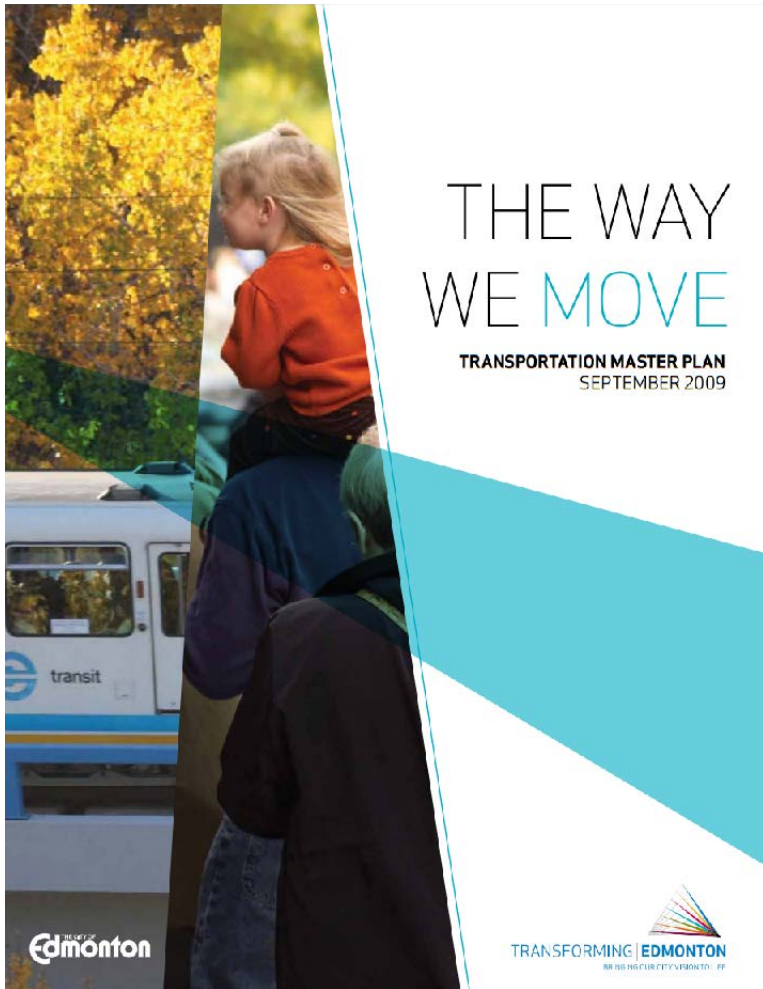


Planning Policy Framework



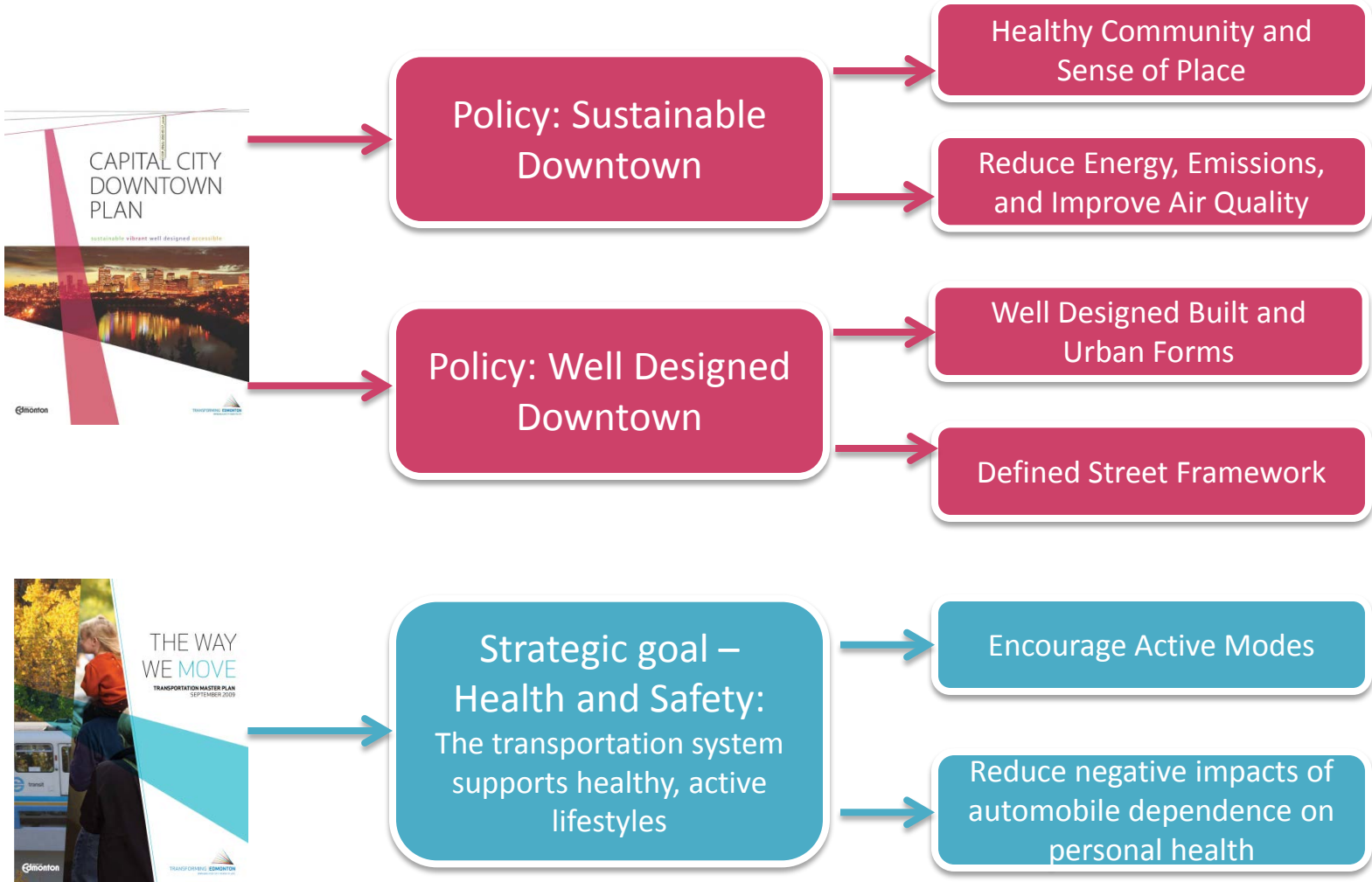
- Maintain and optimize the use of the roadway system to Downtown Edmonton
- Enhance the viability of alternative modes of transportation
- Manage parking
- Excellence in street, park and open space design

Transportation Policy Framework



- Transportation and land use integration
- Public transportation as a cornerstone
- Encouragement of active transportation
- Manage the transportation system more effectively

Policy Framework: Transportation Planning & Vibrant Healthy Communities

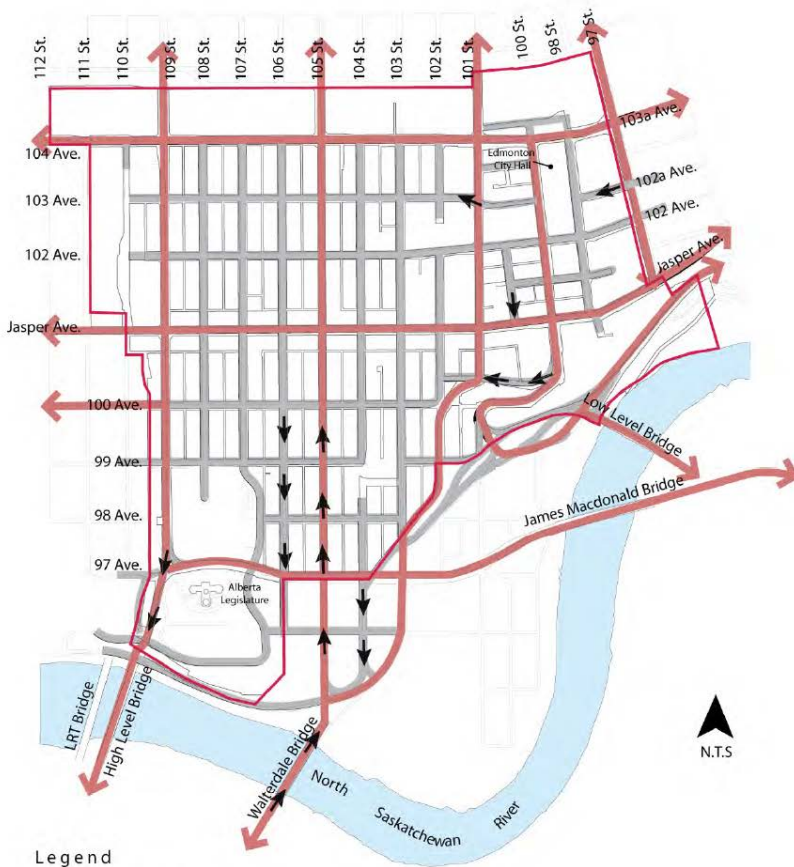


Policy Framework – High Level Neighbourhood Planning

Figure 22: Roadway Network

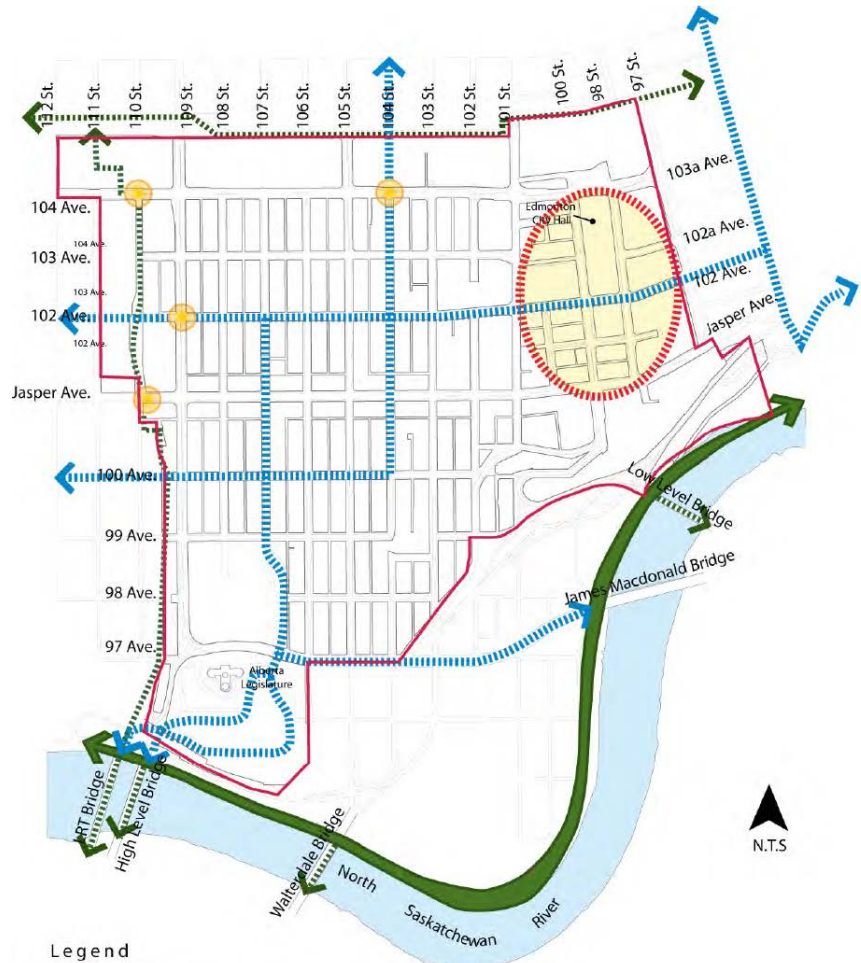
Map shown is accurate but format is to be altered to be consistent with other maps for final draft.

Bicycle Network



Legend

- Downtown ARP Boundary
- Street Network
- ↔ Arterial Roads
- ← One-Way Direction

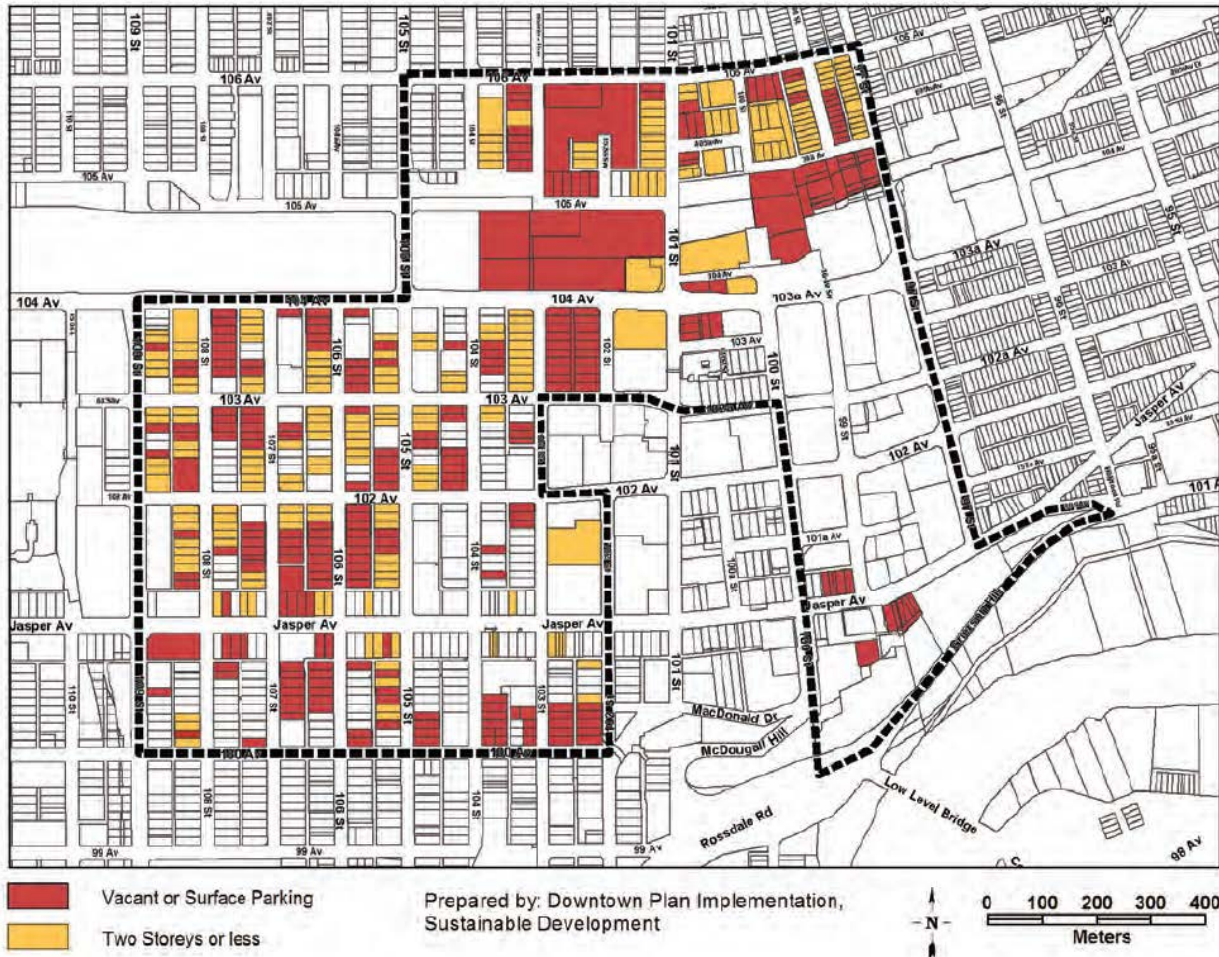


Legend

- Downtown ARP Boundary
- ↔ Multi-use Trail
- ↔ Bicycle Route
- ↔ River Valley Park
- Proposed Intersection Crossing Enhancements
- Proposed Bicycle Station Area

Scale of Redevelopment – Downtown in 2013

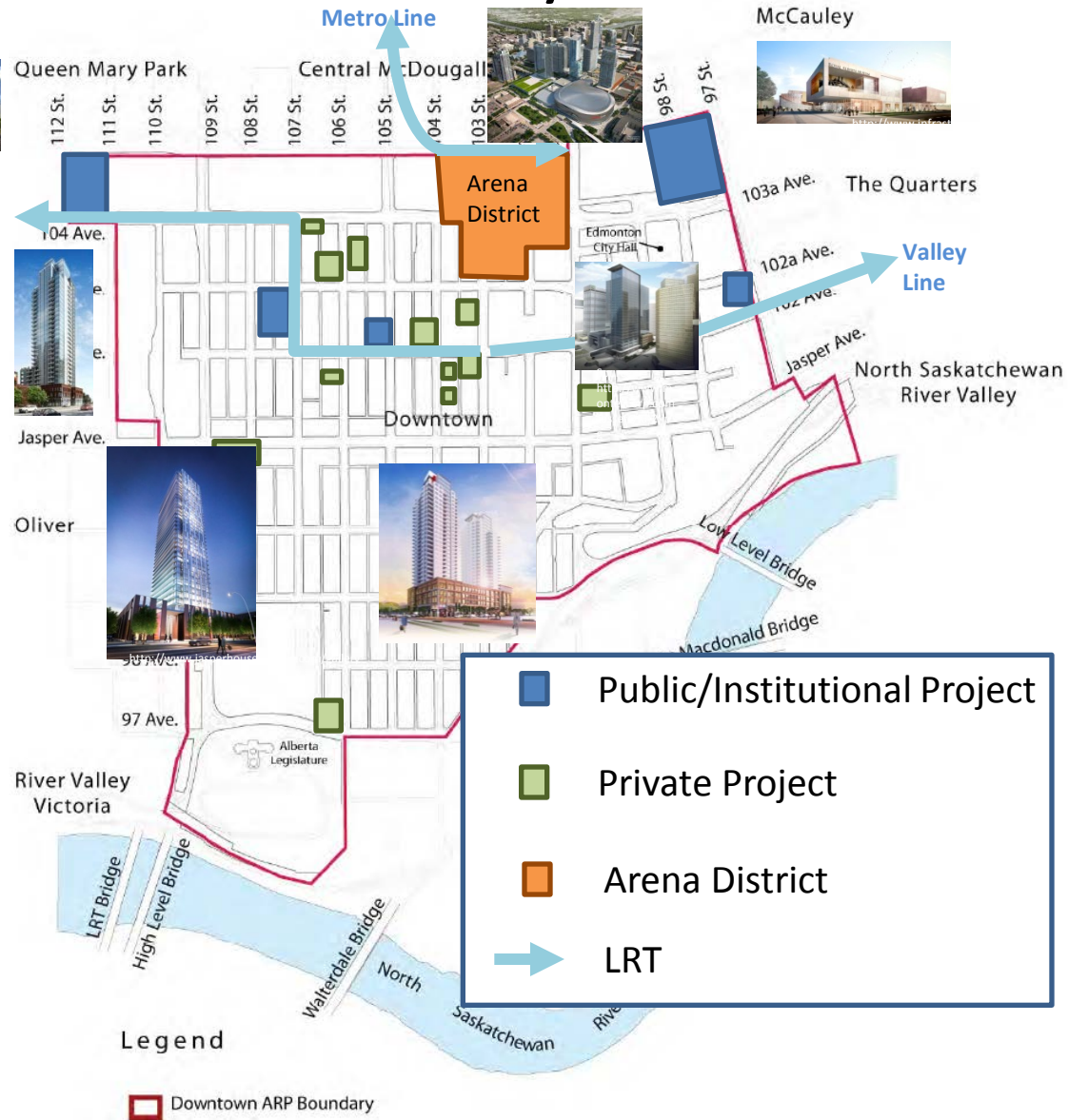
Figure 3: Vacant or Under-developed Land



- 32% of land was vacant or surface parking lots
- 20% of land was underdeveloped (2-storeys or less)

Scale of Development – Downtown by the Numbers

- 10 City Blocks of development on previously vacant/underutilized land
- 1.6 million sq. ft. office space
- 10,000 new office workers
- 4000 new residential units
- 50 % residential population increase
- 3 million visitors to new arena per year
- 4 New LRT stations
- 2 New LRT Lines
- \$1.8 billion private investment
- \$500 million public investment



Scale of Redevelopment – Arena District

- \$605 Million Arena “Catalyst Project” + approximately \$1.8 Billion in surrounding district under construction



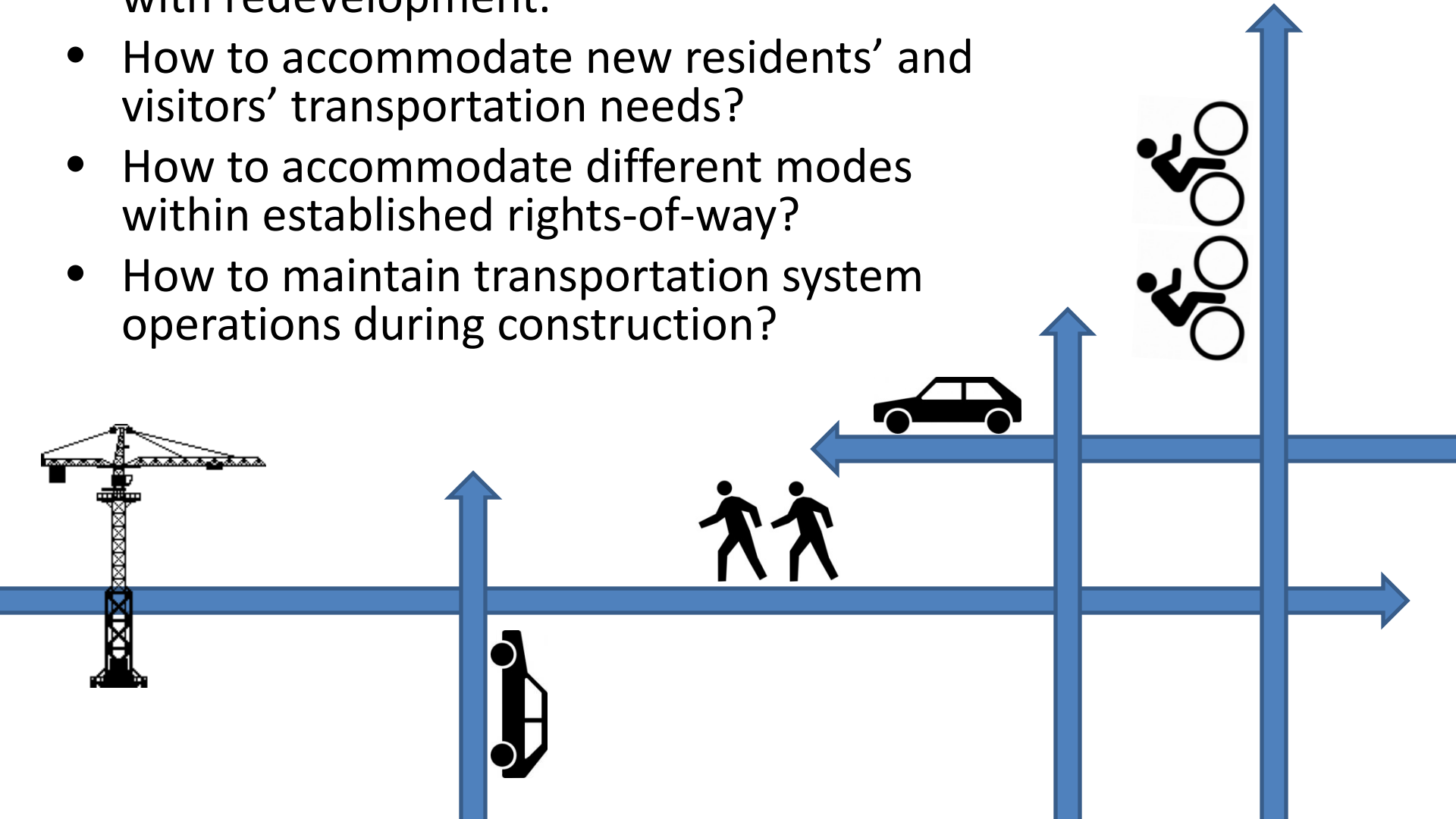
Scale of Redevelopment – Beyond the Arena District

- Numerous additional proposals in addition to arena and district.
- Approx. \$2 Billion in projects proposed or under construction



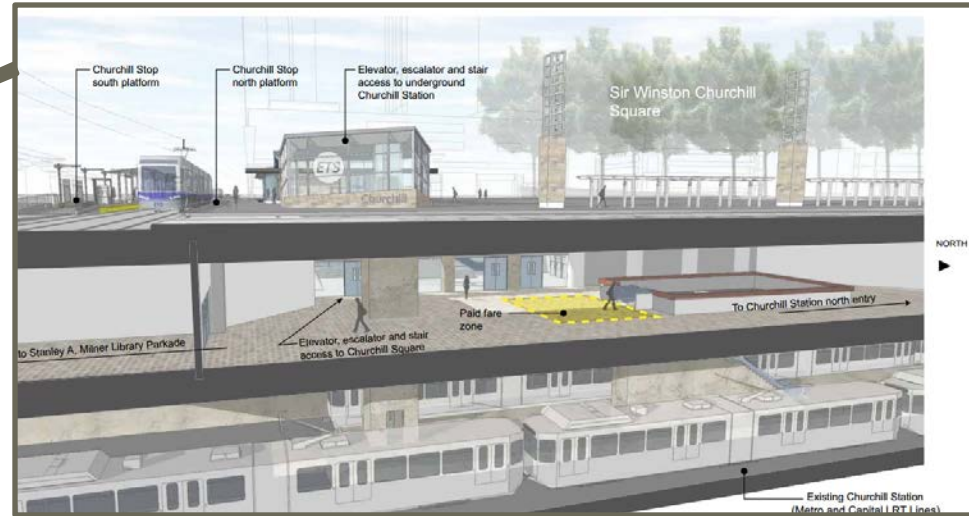
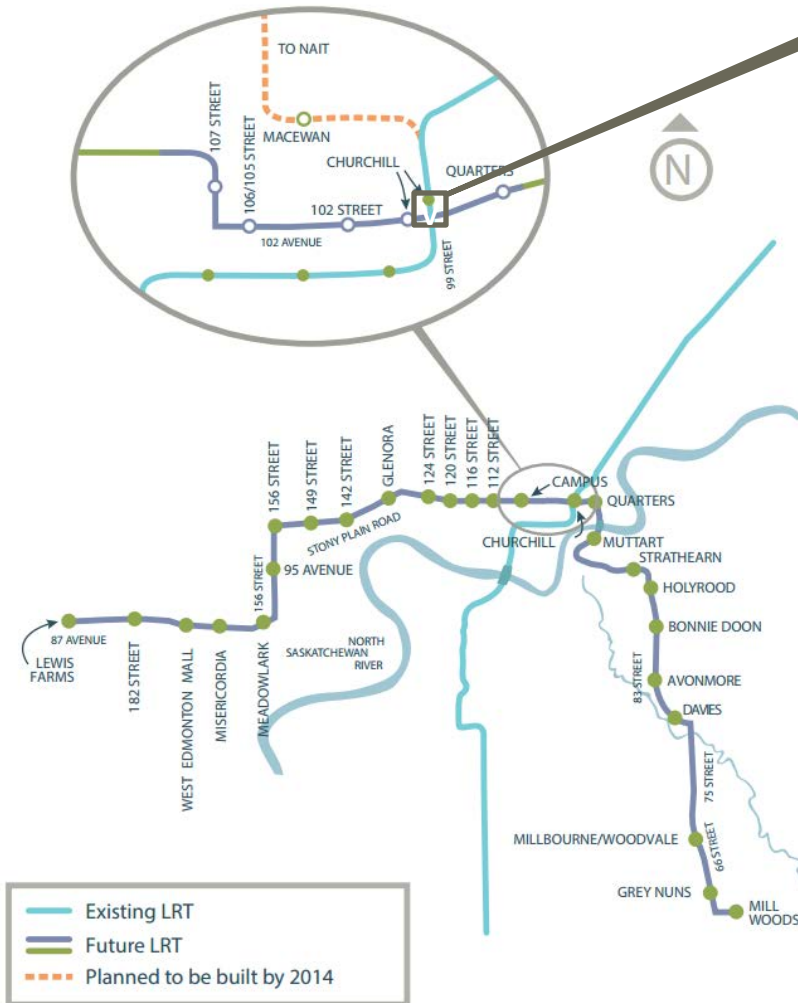
Planning & Design - Challenges/Opportunities

- Opportunities to implement strategic goals with redevelopment.
- How to accommodate new residents' and visitors' transportation needs?
- How to accommodate different modes within established rights-of-way?
- How to maintain transportation system operations during construction?



Transportation Planning & Design

Valley Line LRT



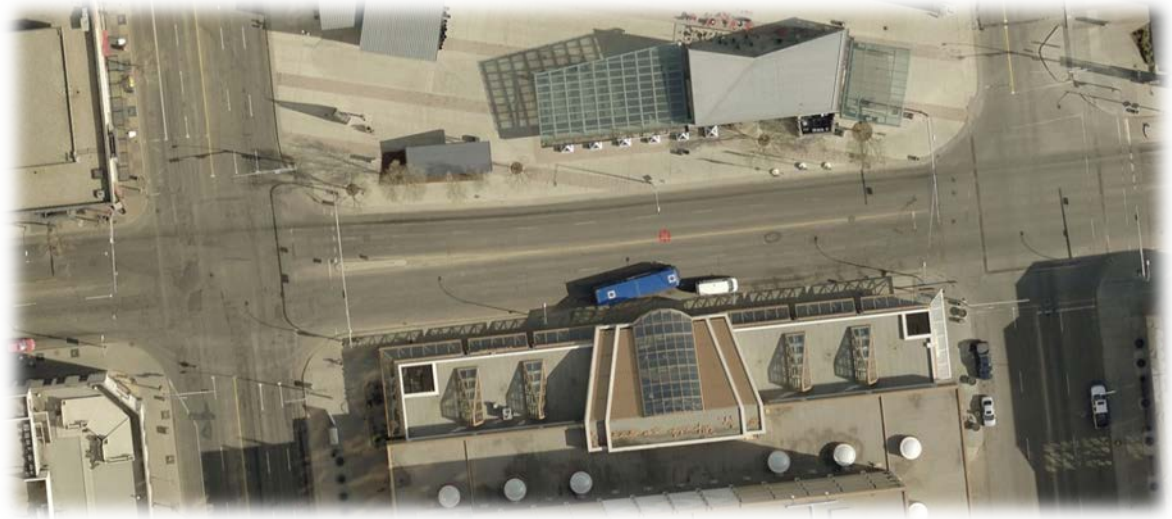
ist rendering looking West

- Metro Line (recently completed) and Valley Line (under construction) provide alternative transportation to southeast and northwest portion of Edmonton
- 102 Avenue through downtown reduced to one lane eastbound

Transportation Planning & Design

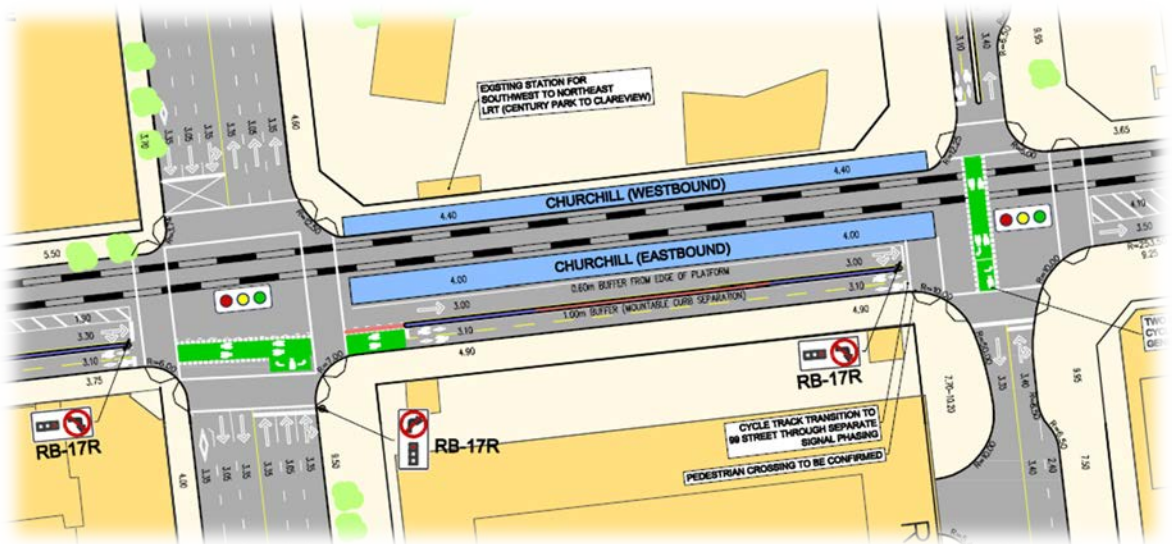
102 Avenue Today

- 4-5 Lane Cross Section
- Bus Service
- Capital Line LRT Station (underground)

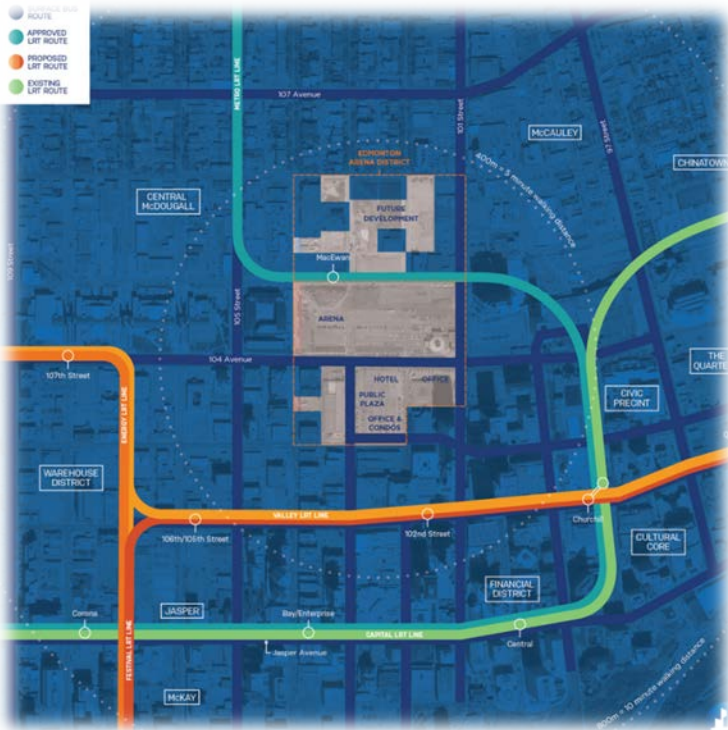


102 Avenue Future

- 1 Lane Eastbound
- Protected bike lanes
- Bus Service Relocated one block north
- Valley Line LRT (at grade) with connection to Capital Line (underground)



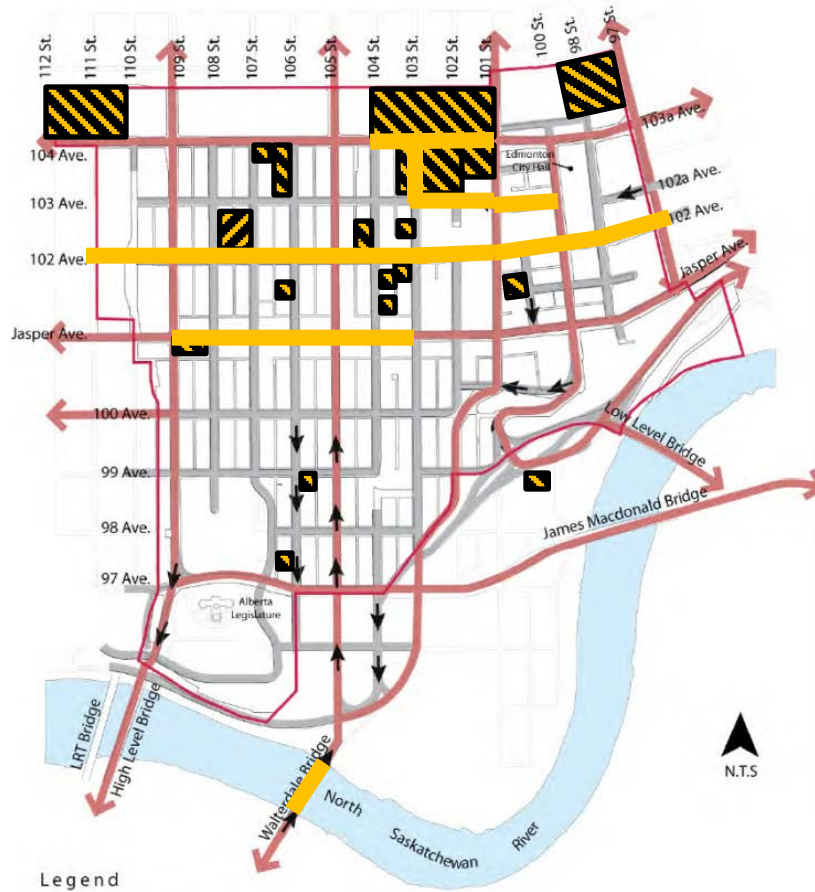
Transportation Planning & Design



Integrate transportation with proposed development.

Implementation Challenges


- How to manage transportation system during construction?



Legend

 Downtown ARP Boundary

 Street Network

 Arterial Roads

 One-Way Direction



Construction proposed or underway on Downtown Properties



Construction proposed or underway on Downtown Streets



Implementation Challenges



Construction Impacts on Transportation Infrastructure



Communication & Coordination

Downtown Implementation Strategy

“To coordinate, communicate, market, and effectively manage construction activity in Downtown and the Quarters.”

Downtown
Capital
Construction
Co-ordination
Committee

Downtown
Communication
/Marketing
Committee

Downtown
Partners
Working Group

Including Transportation Planning, Transportation Operations, LRT Design & Construction and Edmonton Transit

Communication & Coordination



Downtown Capital Construction Coordination Committee:

Internal experts to share information on Downtown construction and coordinate work in order to avoid inefficiencies, address issues, and take advantage of opportunities for coordination.



Communication & Coordination



Downtown Communication/ Marketing Committee:

Effectively communicate City information related to Downtown construction, to mitigate public frustration with construction and congestion and to market Downtown as a vibrant, dynamic destination both now and in the future.



Lesson Learned (so far...)

- Integrated multidisciplinary team needed to effectively implement and manage change
- Continued engagement, communication, and coordination
- Providing guaranteed “clear routes” (Access Loop)
- Land use/development planning and transportation planning cannot proceed independently
- Still Learning!

Questions

